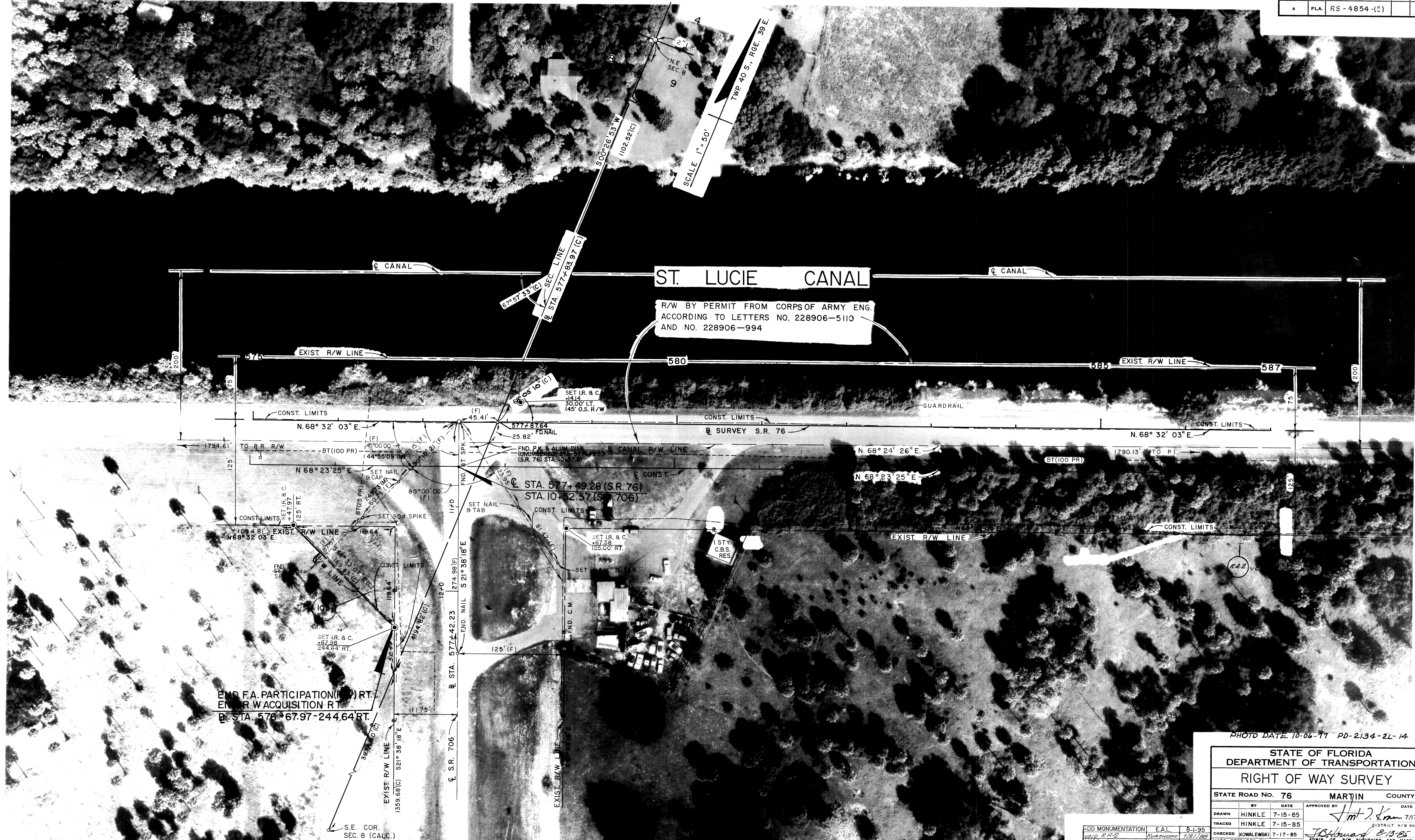


FED. ROAD DIV. NO.	STATE	F A PROJECT NO.	FISCAL YEAR	SHEET NO.
3	FLA.	RS-4854-(5)		11



END F.A. PARTICIPATION (F) RT.  
 END R/W ACQUISITION RT.  
 @ STA. 576+67.97-244.64 RT.

NOTE: ALL DISTANCES AND ANGLES FOLLOWED BY (M) ARE BASED ON FIELD MEASUREMENTS MADE DURING THE R/W MONUMENTATION SURVEY.

PHOTO DATE 10-06-77 PD-2134-2L-14

STATE OF FLORIDA  
 DEPARTMENT OF TRANSPORTATION  
 RIGHT OF WAY SURVEY

STATE ROAD NO. 76		MARTIN COUNTY	
BY	DATE	APPROVED BY	DATE
DRAWN	HINKLE 7-15-85	<i>Jim J. Kim</i>	7/17/85
TRACED	HINKLE 7-15-85		
CHECKED	KOWALEWSKI 7-17-85	<i>J.B. Howard 8-13-85</i>	
MISC. CHANGES	D.K. 8-24-87	ADMIN. OF R/W SURVEYING AND MAPPING	
MISC. CHANGES	11-17-86	FIELD BOOK NO'S 1009746,	
MISC. CHANGES	10-20-86	1017764, 1010298, 1018530, 1017767	
W.P.I. NO.	4116124	SECTION 89060-2508 SHEET 11 OF 17	

(SEE SHEET 1 FOR NOTES, SURVEYOR'S NOTES, & SURVEYOR'S CERTIFICATE) ● DENOTES R/W MARKER (SET IR. & C.)